

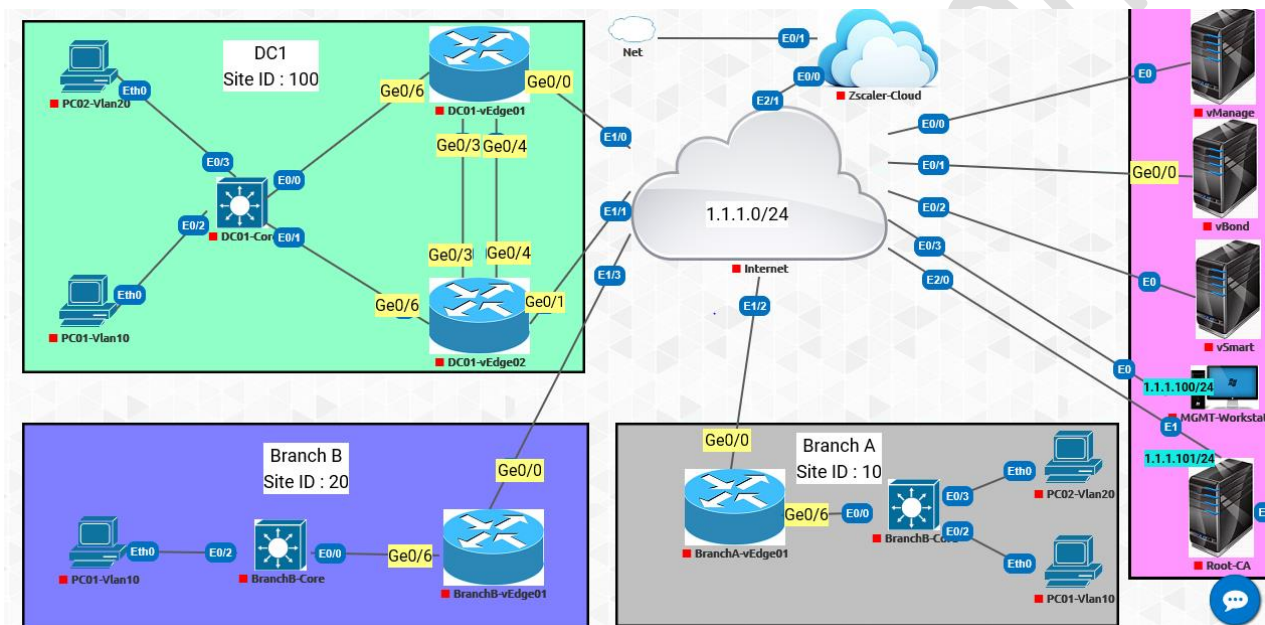
Controllers Setup

Platform: <https://racks.uninets.com>

Lab Name: SDWAN-Basic-Lab

Topology

Controllers Setup

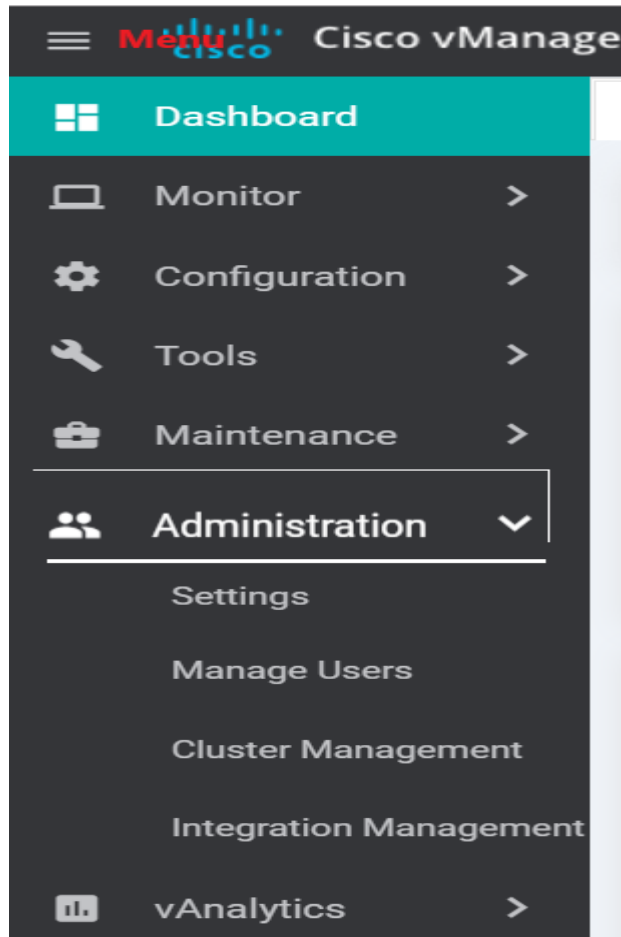


Task:

- Setup vManage

vManage:-Fully manageable centralized portal to run and operate software defined network (SD-WAN).

Menu → Administration → Setting



Configure Organization name vBondip address and Controller Certificate Authorization.

ADMINISTRATION | SETTINGS

Organization Name	Network LAB	View
vBond	1.1.1.2:12346	View Edit
Email Notifications	Disabled	View Edit
Controller Certificate Authorization	Enterprise	View Edit
WAN Edge Cloud Certificate Authorization	Automated	View Edit
Web Server Certificate	04 Nov 2019 10:37:40 PM	CSR Certificate
Enforce Software Version (ZTP)		View Edit
Banner	Disabled	View Edit
Reverse Proxy	Disabled	View Edit
Statistics Setting		View Edit
Cloud onRamp for SaaS	Disabled	View Edit
vAnalytics	Disabled	View Edit
Call Home	Disabled	View Edit
Client Session Timeout	Disabled	View Edit
Data Stream	Disabled	View Edit
Tenancy Mode	Single Tenant	View Edit
Statistics Configuration	Collection Interval: 5 minutes	View Edit
Maintenance Window	Not Configured	Edit
Identity Provider Settings	Disabled	View Edit
Statistics Database Configuration	Maximum Available Space: 59,0586 GB	View Edit

Configure Controller Certificate Authorization: -Click on **Enterprise Root Certificate**→ Select your root CA file,

Note: Make sure to use “Network LAB” as organization.

Note: If you don't have root certificate already, please refer to below “Setup_Root_CA_Server.docx” .



Setup_Root_CA_Server.docx

Controller Certificate Authorization

Enterprise

Certificate Signing by: Symantec Automated (Recommended) Symantec Manual Enterprise Root Certificate

Certificate

Select a file

```
-----BEGIN CERTIFICATE-----
MIIFtCCA52gAwIBAgIBADANBgkqhkiG9w0BAQsFADB1MQswCQYDVQQGEwJJTER
MA8GA1UECAwQmFuZ2xvcmUxETAPBgNVBAcMCEJhbmdsb3JIMRQwEgYDVQQKDA0
ZXR3b3JlExBQJEqMCgGCSqGSIb3DQEJARYbU3VyamVldC5TaW5naDAwMjZ1h
aWwuY29tMBA4XDE5MDYyMDA3NTc0MFoXDTE5MDYyMzA3NTc0MFowdTElMAkGA1UE
BhMCSU4xETAPBgNVBAcMCEJhbmdsb3JIMREwDwYDVQQHDAhCYW5nbG9yZTEUMBIG
A1UECgwLTmV0d29yayBMQUl0xkAoBgkqhkiG9w0BCEQEWG1N1cmplZXQuU2luZ2gw
MDlyQGdtYWlsLmNvbTCCAiIwDQYJKoZIhvcNAQEBBQADggIPADCCAgoCggIBAMCq
3NhM6wLbnDW1DQGfHdb2V9YrQ8FD33E+f3izdHCKVw1EwkbxNFxqt2a4X8Nu9c7Q
vjTh3iU61MSqoixAGfmDTipni/GmrhrDQksaHWHY4gPau0ATq9aRMzV14M5xsPzL
75e86WqmD/99kAwP4uqDG7Wdm9B0Gy27FQL+6RZ9pYBLppZ/OE12mPr4EPBTzE91
7oipK16goqktSxxRUoyol5u+JlZjhJfreaF1+dVys2Xp2gfo3N3yEG0eytU+eJ
PxSFTsr/k0lReT7JLalQv+M07oqOrvQqvFAP1XlsmMSP1GXcSvBnS13+CaTWY1J
tZThmizLoeNTH+5xHdfKqzi7Oo6/RNH2shXnZn6jxrew0WeLEPDhZXTc+Zowzr
0669S/o9fborNYZ1/ttSXVHE70J4cSYwHaezTosIAZ/KDP5lnXY9uLzLzRwxXf
qEc2yKrfibq0ISYXED45ZalQuV4Xdc+Kw4N9qpbTsx+vKoDcFYAYJZUHwyJMjQ
2Gv0NPz2KQQ/1NOWjoGnjdx2m7pmVyQdNXkl2R1E3rJmZlZx3BXzxBdiCeoVHl8
-----
```

Set CSR Properties

Domain Name

lab.local

Organizational Unit

Network LAB

Organization

Network LAB

City

Gurugram

State

Haryana


Email

sdwan@lab.local

2-Letter Country Code

IN

Validity

1 Year 

Import & Save

Cancel

Go Under the Configuration ->Certificate -> Controllers

CONFIGURATION | CERTIFICATES Install Certificate

WAN Edge List **Controllers**

Send to vBond

Search Options

Total Rows: 1

Operation Status	Controller Type	Hostname	System IP	Site ID	Certificate Serial	Expiration Date	uuid
N/A	vManage	vManage	10.98.21.1	1000	No certificate installed	-	d4cbc...

Add Device →
 Generate CSR →
 Upload Certificate →
 Update vBond

Click on Generate CSR → Download

Send to vBond

Search Options

Total Rows: 1

Operation Status	Controller Type	Hostname	System IP	Site ID	Certificate Serial	Expiration Date	uuid
N/A	vManage	vManage	10.98.21.1	1000	No certificate installed	-	d4cbc...

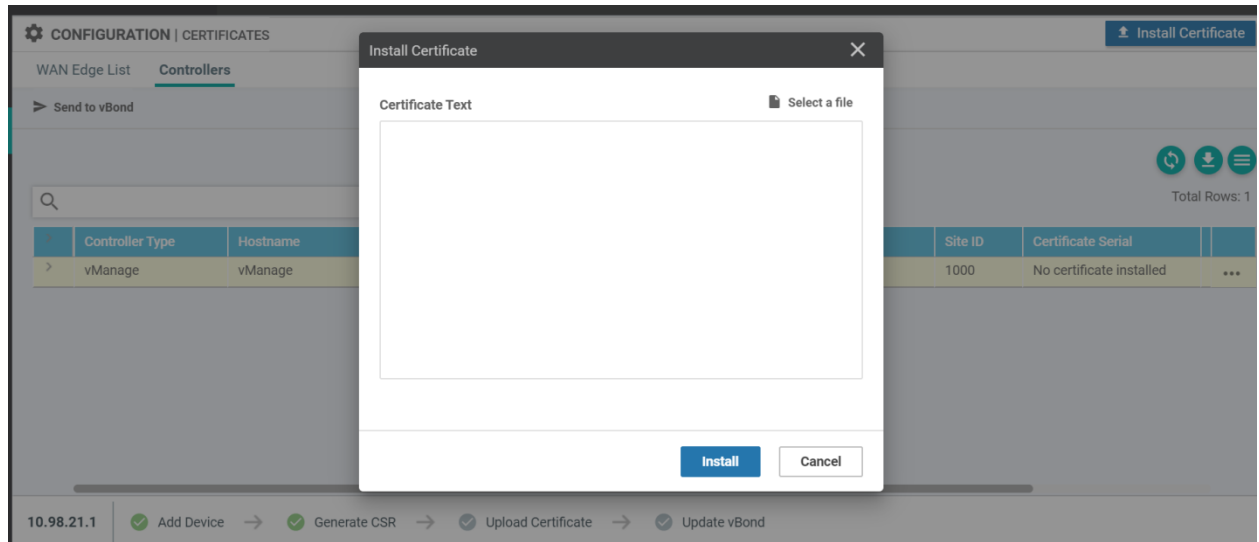
- View CSR
- View Certificate
- Generate CSR**
- Reset RSA
- Invalidate

Move vManage.csr file to your root CA server under /root/ca/requests using WINSXP and execute below command on your root CA server to issue certificate for vManage.

openssl ca -in <filename.csr> -out <filename.crt>

Once certificate is generated transfer .crt file to MGMT workstation using WINSXP.

Click on Install Certificate → select your vManage.crt file.



If certificate has installed successfully you should see like below: -

Status	Message	Device Type	Device IP	vManage IP
Success	Successfully synced vEdge list on v...	vManage	d4cbc5bf-9cd2-4dee-abb2-9db332...	10.98.21.1
<pre> [6-Oct-2019 5:00:01 UTC] Install Certificate, on device d4cbc5bf-9cd2-4dee-abb2-9db33253fac8, started by user "admin" from IP address "192.168.164.1" [6-Oct-2019 5:00:02 UTC] Pushing serial list to vManage-d4cbc5bf-9cd2-4dee-abb2-9db33253fac8 (vManage) [6-Oct-2019 5:00:02 UTC] Started processing serial list file on vManage-d4cbc5bf-9cd2-4dee-abb2-9db33253fac8 (vManage) [6-Oct-2019 5:00:03 UTC] Completed processing serial list file on vManage-d4cbc5bf-9cd2-4dee-abb2-9db33253fac8 (vManage) [6-Oct-2019 5:00:03 UTC] Done - Push vSmart List for vManage-d4cbc5bf-9cd2-4dee-abb2-9db33253fac8 (vManage) [6-Oct-2019 5:00:03 UTC] Updated controllers with new certificate serial number of vManage-d4cbc5bf-9cd2-4dee-abb2-9db33253fac8 [6-Oct-2019 5:00:04 UTC] Certificate Installed for vManage-d4cbc5bf-9cd2-4dee-abb2-9db33253fac8 </pre>				

Now we have successfully done with vManage installation.